



With over 20 years of experience, Mindray hosts a wide range of ultrasound imaging solutions including cart-based and portable systems. Being exported to over 190 countries, Mindray ultrasound systems are today being used by medical professionals for general as well as highly dedicated clinical utility. With a global R&D base spanning over Asia, Europe and America, the ultrasound solutions by Mindray are a result of an integral cooperation with the medical community, allowing for the ultrasound systems to be extremely user centric in terms of performance and usability. Mindray is well positioned to become one of the leading ultrasound imaging solutions provider.



**DC-N3 PRO**  
Diagnostic Ultrasound System  
Your ideal partner in OB/GYN

Mindray Building, Keji 12th Road South,  
High-tech Industrial Park, Nanshan, Shenzhen 518057, P.R. China  
Tel: +86 755 8188 8998 Fax: +86 755 26582680  
E-mail: intl-market@mindray.com www.mindray.com

**mindray** | healthcare within reach are registered trademarks or trademarks owned by Shenzhen Mindray Bio-medical Electronics Co., LTD.  
©2016 Shenzhen Mindray Bio-Medical Electronics Co., Ltd. All rights reserved. Specifications subject to changes without prior notice.  
P/N:ENG-DC-N3 PRO-210285x8P-20161108

**mindray**

# REDIFINING THE BASE

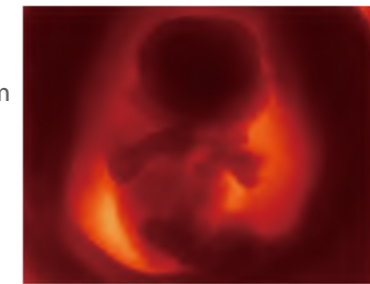
DC-N3 PRO is designed to provide confident ultrasound diagnosis for obstetric and gynecological healthcare, combining high image quality, versatility and affordability all in one smart system. With the best 4D imaging in range, innovative rendering modes, inbuilt tutorial module and simplified workflow, DC-N3 PRO is truly a redefinition of the base, providing you with much more than just an ordinary ultrasound imaging system.



## Advanced Clinical Tools

**4D Imaging** offers you more than just a picture. The DC-N3 PRO delivers tools that help you take advantage of the full value of volume data. With improved contrast resolution and signal-noise ratio, viewing the fetal structure is now much easier. This increases user confidence and helps make faster decision in a variety of clinical scenarios.

**iLive™** (realistic 4D rendering imaging) generates amazingly realistic view of the fetus with human skin-like images, integrating a ray-casting algorithm with a new virtual lighting modality.



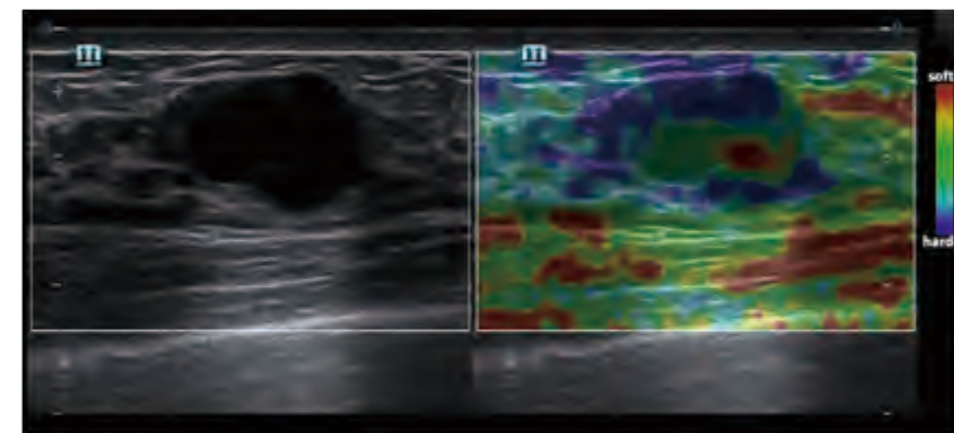
Fetus with iLive

**iPage** enables better analysis of the internal anatomic structures through multiple parallel volume slices.

**Smart OB** ensures you measure fetal parameters automatically. The system will trace and calculate the BPD (Bi-Parietal Diameter), OFD (Occipito Frontal Diameter), HC (Head Circumference), AC (Abdominal Circumference) and FL (Femur Length) after one click, providing you with higher efficiency during OB examination.

**Smart NT** automatically traces the NT (Nuchal Translucency) tube cavity edge and displays max NT result by industry standard method of "In to In".

**Natural Touch Elastography** reduces dependence on user operation technique, improving operators' reproducibility with higher stiffness sensitivity and better stability. The Natural Touch Elastography is available on linear transducer of DC-N3 PRO, providing extra diagnostic information in women's healthcare.



Elastography of breast cyst



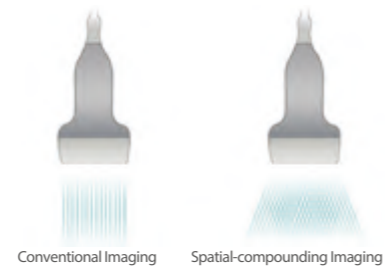
## Image Optimization Technology

### iClear

iClear speckle-reduction imaging technology reduces the image speckle noise and acquires clearer and sharper lesion contours.

### iBeam

iBeam spatial-compounding imaging technology permits use of multiple transmitting angles to form a single image, resulting in enhanced contrast resolution and improved visualization.



### PSH

Phase Shift Harmonic imaging (PSH), also known as purified harmonic imaging, plays an important role in reducing noise while preserving tissue definition and resolution.

## Dedicated Transducer Solution for OB/GYN



3C5A convex transducer offers complete solution for whole perinatal period



V10-4 transvaginal transducer for dedicated GYN scanning



V10-4B transvaginal transducer with bent handle for dedicated GYN scanning



7L4A linear transducer with superb solution for superficial and Breast imaging



D6-2 volume transducer for high definition 3D/4D imaging



3D of fetal face



3D of fetal spine



Fetal sagittal profile



Fetal abdominal circumference



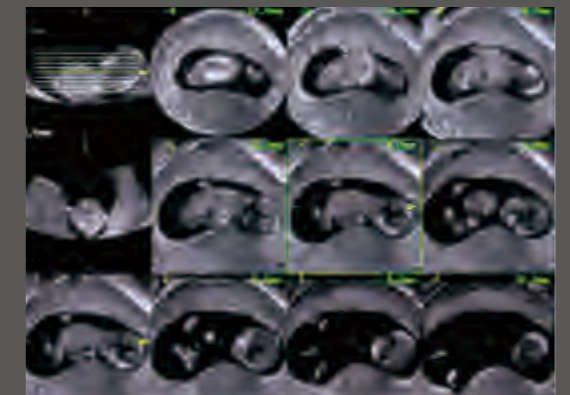
Yolk sac



Circle of Willis in fetal brain



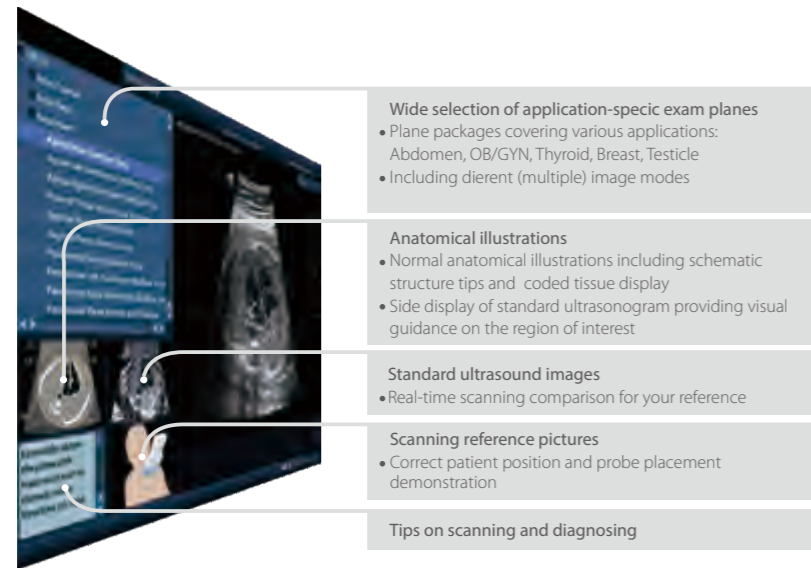
PW of umbilical cord



iPage of fetal body

## Simplified Workflow and Inbuilt Imaging Guidance for Productivity

**iScanHelper** (Inbuilt tutorial module) helps practitioners learn basic scanning knowledge with the operation technique, standard planes, and anatomical information.



**MedSight™** (Mobile device App for image transferring) lets you transfer clinical images and cines to your smart device via an interactive app. This is ideal for a mother-to-be wanting to share the images of the fetus with her family or friends; or for a training session or a discussion with your peers on a rare case. With MedSight you can now take the clinical examinations with you wherever needed.



**iStorage** (Software on PC for image transferring) directly transfers images and reports to PC via wired or wireless network without DICOM.

**iTouch** acquires instant image optimization in B, Color, and PW modes, with the intelligent one key iTouch function.

**iPower** gets one hour of continuous scanning with the high capacity built-in battery. Eliminate the risk of losing your scanning information during power outages.

With a smart, compact and a highly adjustable shape frame, the DC-N3 PRO is designed for your everyday requirements. Reliable and practical, the DC-N3 PRO comes with no limits. With an innovative ergonomic design, it's all about maximizing your comfort.

